

Tree seed production in China

Yongqi ZHENG

Director of Forest & Grass Genetic Resources
Chinese Academy of Forestry



Acknowledgements

Bioversity International - Malaysia Office (Dr. Riina Jalonen) for guidance of the preparation of the PPT

APAFRI Secretariat for inviting me for this important APFORGEN workshop

Webinar organizers for arranging my online participation



1 National tree seed production programs



National (provincial) production bases of genetically improved tree seeds



National (provincial) certification of improved tree seeds, all the seeds need to obtain a certificate before entering market



Annual quality examination of tree seeds used in market and nation-wide crack down of selling fake and poor quality seeds



Seasonal/annual government (from local to central) promotion for seed & seedling markets



Distribution of production bases

The production bases covers different types of seed production, incl. seed collection stands, seed production areas, seed orchards, clonal archives, with increasing genetic gains.

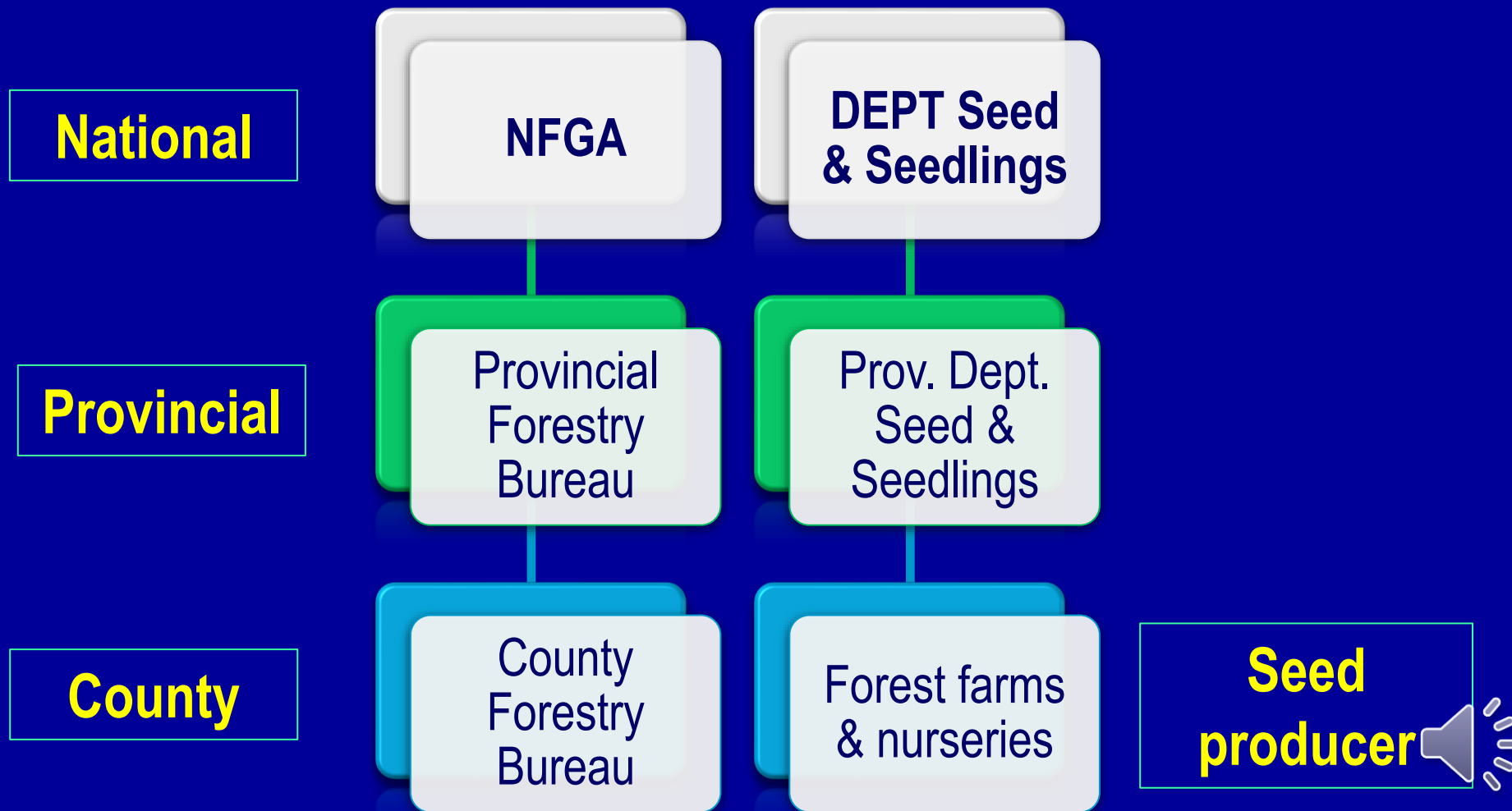


296 **national** production bases of improved seeds for important tree species

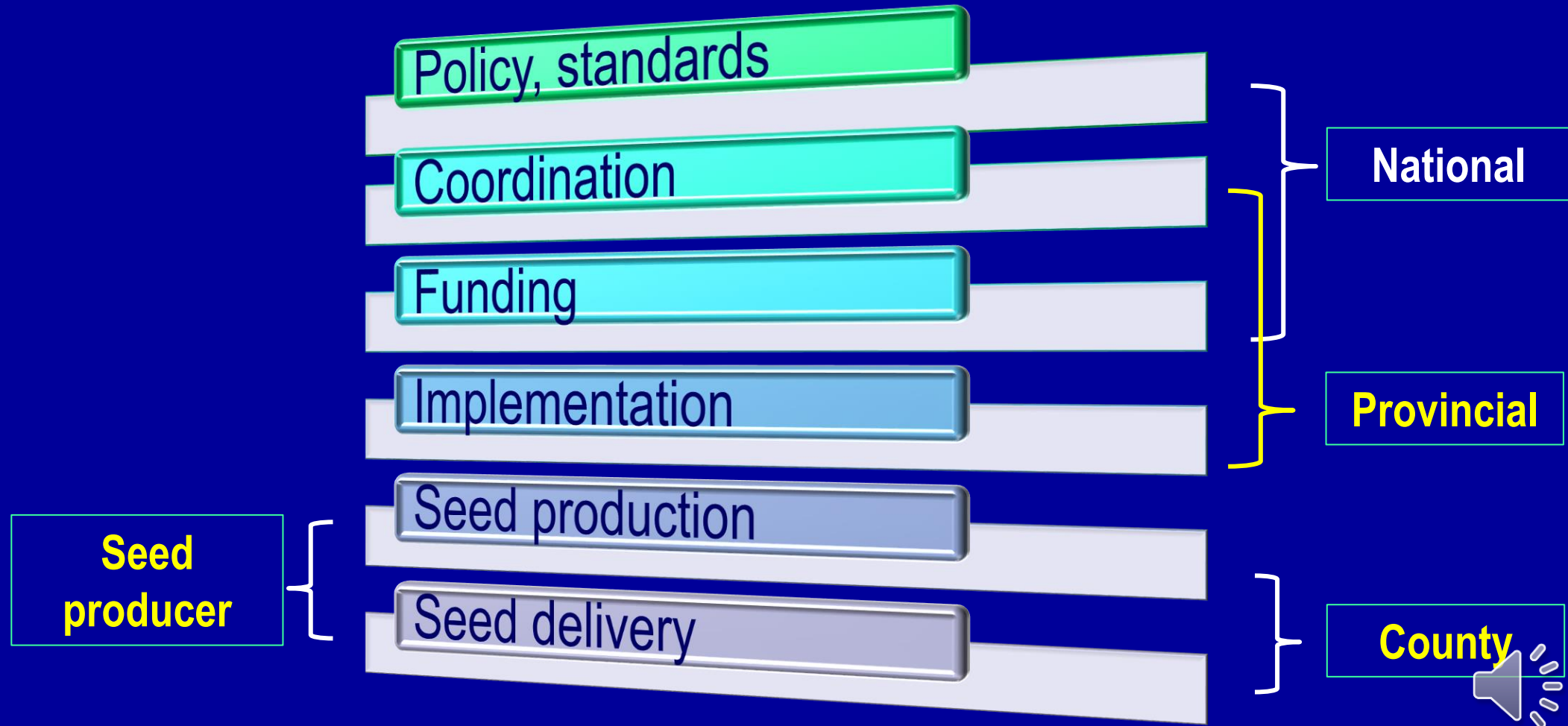
>300 **provincial** production bases of improved seeds of key tree species



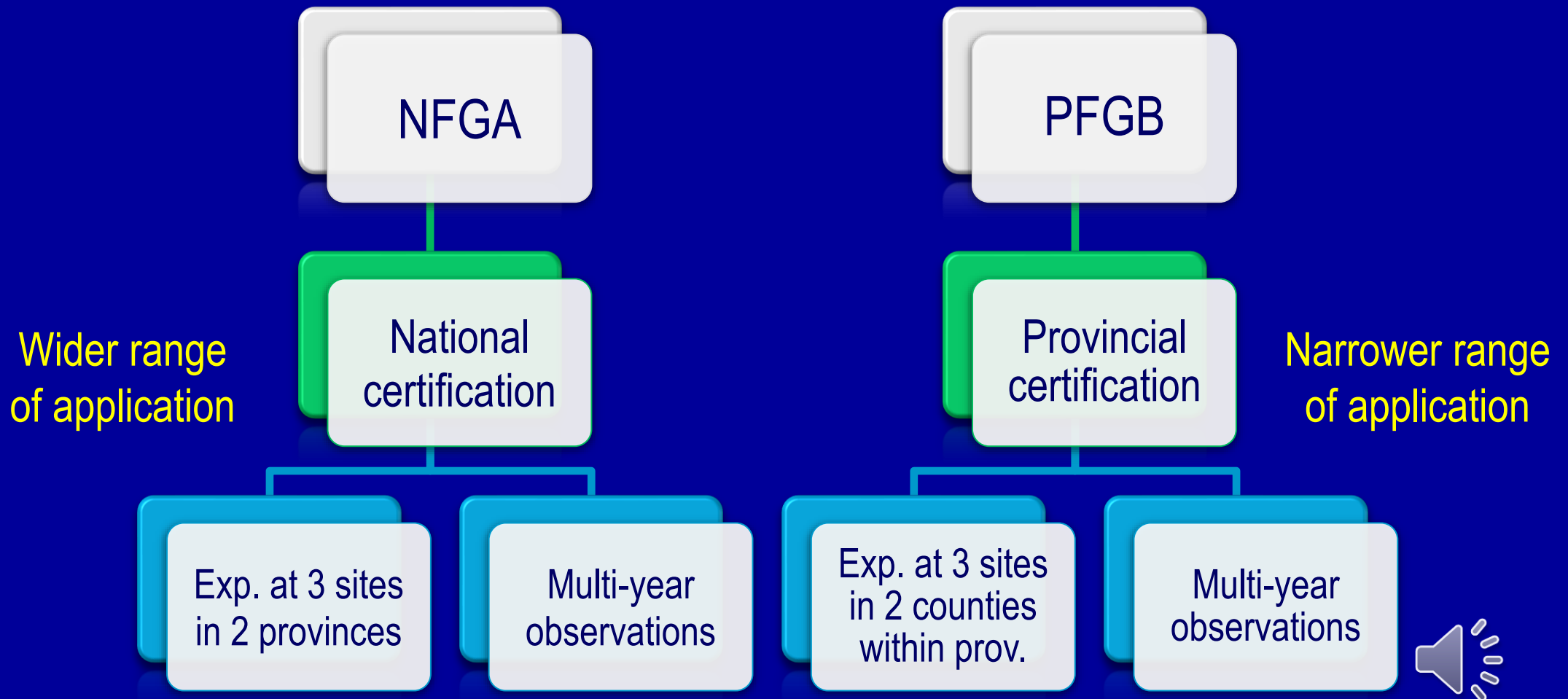
Administrative framework



Institutional mechanisms



National/provincial seed certification schemes



2

Good practices and technologies

Practices

Strong top-down commitments (assessed for achievement)

Seed zones for major afforestation species (national standards)

Production bases (seed stands, seed orchards, clonal archives)

National/Provincial certification of improved seeds (Provenances, families, clones/varieties) with restrict quality requirements

Annual provincial/national seed & seedling quality examination, and crack down illegal market activities

Technologies

Developing genetic ID, labelling and transport-logistic chain tracking

Bigdata and AI based species identification mobile APP



3 Working with local communities

Individual households

Farmer union/cooperative

Entrepreneurs

Cooperation model: Company +households, share holding

Mostly involved in
the production of
ornamental plants.



Experiences and lessons learned

Strong governmental commitment

Strict measures for quality control and market
inspection, trading promotion activities

Imbalance: More focuses on timber species,
overlooking other species (e.g. ecological restoration)

Negative impacts: Policy of subsidies to the improved
seeds

Experiences

Lessons



A transition of tree seed production system in China is going on...



Thank you!

