

Improvement of seed supply system in Cambodia

Mr. Sreng Syneath

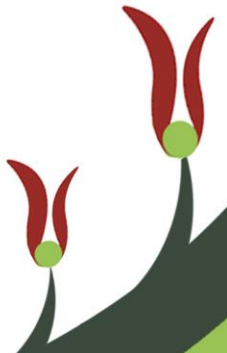
Dr. So Thea

**Institute of Forest and Wildlife Research and Development,
Forestry Administration**



Contents

1. Background
2. Seed sources establishment
3. Capacity building of tree seed suppliers
4. Promotion of the use of good quality seeds
5. Ways forward

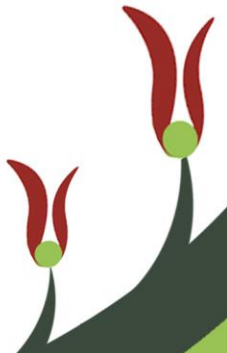


1. Background

Status of seed supply before 2015:

- Tree seeds were collected randomly for sale
- Some identified seed sources in natural forests, but few were well maintained and used
- Lack of trained seed suppliers.

Results in the past eight years:



2. Seed sources establishment

2.1 Identified seed sources in natural forests

- Identified 20 priority tree species for planting and conservation
- 15 seed sources in natural forests identified (such as *Dalbergia cochinchinensis* and *Pterocarpus macrocarpus*)
- Two contact persons in each site identified.



Photos of seed sources in natural forests



2. 2 Seed production areas established

Seed production areas of 10 species:
Acacia auriculiformis, *A. mangium*,
Albizia lebbbeck, *Dalbergia*
cochinchinensis, *Eucalyptus* spp.,
Heritiera javanica, *Hopea odorata*,
Fagraea fragrans, *Shorea guiso*, and
Toona sureni



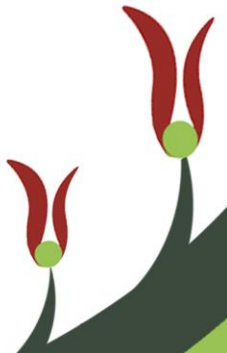
2.3 Seed orchards

- Clonal seed orchards of *D. cochinchinensis*, *Dipterocarpus intricatus*, and *Pterocarpus macrocarpus*.
- Farmer's clonal seed orchards of *D. cochinchinensis* and *D. oliveri*.



3. Capacity building of tree seed suppliers

- Potential seed suppliers identified
- Providing of basic seed collection equipment
- Training on seed collection and seed marketing
- Organized workshop on tree seed supply and forest rehabilitation



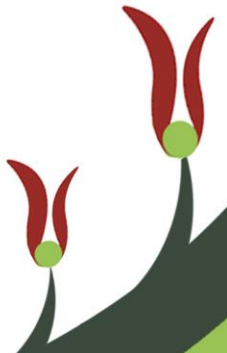
APFORGEN 20th Anniversary and Strategy Review Meeting

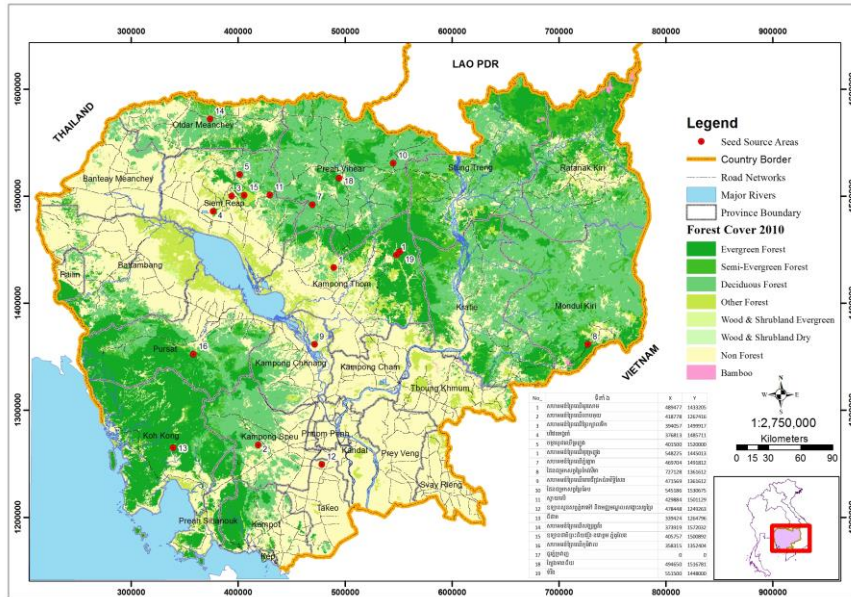
14-17 March 2023, Kuala Lumpur, Malaysia



4. Promotion of the use of good quality seeds

- Maps showing locations of the seed sources
- Four titles of leaflets showcasing seed sources in Cambodia and seed suppliers, guiding the use of quality seeds and seed pretreatment
- Establishment of a tree seed laboratory for coordination and facilitating seed sale.





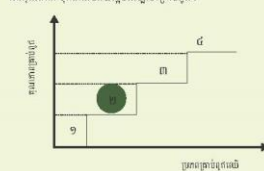
ប្រភពគ្រាប់ពូជឈើ

១. សេចក្តីផ្តើម

ក្នុងការពង្រឹងទីតាំងគ្រប់គ្រងលើវិធានការកាត់សាច់នៅជួរមុខក្នុងវិធី
ជីកលាង។ ឧទាហរណ៍ ប្រសិនបើគ្រប់គ្រងចុងចុងឈ្មួញលើប្រភពមិនច្បាស់
លាង ដូចជាជីកលើដីលាងផ្ទះ ទៅរកជីក ឬក្នុងជីកជីកលើដីលាងឬក្នុង
គោរពលើដីជីកលាងស្រូវក្នុងតំបន់អន្តរជាតិ។ ជាធម្មតាគ្រប់គ្រងចុង
លើវិធីមូលប្រភេទដីលាងស្រូវក្នុងតំបន់អន្តរជាតិ ១. ប្រភពគ្រប់គ្រងលើវិធី
សមាស (ឈ្មួញគ្រប់គ្រងដោយវិស្វកម្ម) ២. ប្រភពគ្រប់គ្រងលើវិធីក្រ
លើវិធី ៣. ខ្សែបង្គោលគ្រប់គ្រងលើវិធី និង ៤. ប្រភពគ្រប់គ្រងលើវិធីក្រ

[illegible]

ដោយឡែកចំពោះតំបន់ដំបូងគ្រាប់ពូជឈើ និងចន្លោះពូជឈើ គឺជាប្រភព
គ្រាប់ពូជដែលមានគុណភាពខ្ពស់ និងប្រជាប្រតិបត្តិទៅតាមការយោបល់ដើម
ឈើដែលមានគុណភាពល្អលាយចម្រុះគ្នា រួចកាប់ដឹកចេញទូទៅដើមដែល
អនុគណភាព ទុកតែដើមលើវារៈដើម្បីបោះគាបជ័រ។



ប្រភពគ្រាប់ពូជឈើមិនសម្រួល (Unidentified Seed Sources/
Random Collector) ។ ២. ប្រភពគ្រាប់ពូជឈើក្នុងព្រៃធម្មជាតិ (Identified
Seed Sources in Natural Forest) ។ ៣. តំបន់ផលិតគ្រាប់ពូជឈើ
(Seed Production Area) ។ ៤. ព្រៃពូជឈើ (Seed Orchard) ។

ការបេះប្រមូលគ្រាប់ពូជគួរធ្វើឡើងនៅពេលណា(ឆ្នាំណា)ដែល ដើមឈើ ភាគច្រើននៅក្នុងព្រៃប្រមូលបានច្រើន (Mass fruiting) ដើម្បី ធានាថា គ្រាប់ពូជបានមកពីការបង្កាត់ដើមឈើជាច្រើន។

២. គោលការណ៍ដែលនាំក្នុងការបកប្រែសម្រាប់ពូជ

គួរបញ្ជីប្រាសច្រាបច្ចងឈើដែលមានប្រភពនៅក្នុងតំបន់ដែលត្រូវដាំដុះ ព្រោះ ដើមពូជបានបន្តនៅនឹងលក្ខណៈនិងទីកន្លែង (អាកាសធាតុ និងដី) រួចបរិយាយ។ ក្នុងករណីដែលមិនមានប្រភពច្រាបច្ចងនៅក្នុងតំបន់ដែលត្រូវដាំដុះ គួរបោះប្រមូល គ្រាប់ពូជពីតំបន់ដែលមានលក្ខណៈនិងទីកន្លែងប្រហាក់ប្រហែលគ្នា។



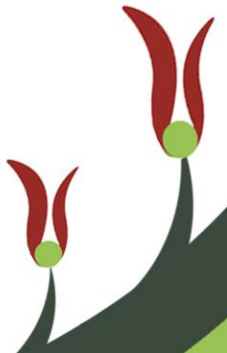
ប្រភពគ្រាប់ពូជលើក្នុងព្រៃធម្មជាតិ៖ ដើមត្រពាំងស្លា នៅក្នុងព្រៃធម្មជាតិ
ខេត្តសៀមរាប (ប្រឆាំងលើ) និងដើមជូនចែម នៅតំបន់វាលជំណាក់ជំរំ
ឧទ្យានជាតិជួរភ្នំក្រវាញកន្លែងខាងត្បូង(ប្រឆាំងក្រោម)។

สถาบันวิจัยระบบบริหาร และ พัฒนาระบบนิเวศ สวทช. ร่วมกับ สถาบันวิจัยและพัฒนาพื้นที่ป่าไม้ สอวน. ดำเนินการภายใต้โครงการ "การพัฒนาและปรับปรุงระบบนิเวศป่าไม้ในเขตรักษาพันธุ์สัตว์ป่าเขาบรรทัด จังหวัดพัทลุง" โดยได้รับการสนับสนุนจากกรมส่งเสริมการค้าระหว่างประเทศ กระทรวงพาณิชย์
Institute of Forest and Wildlife Research and Development Project: "Promotion of Forest Rehabilitation in Cambodia and Vietnam Through Demonstration Models and Improvement of Seed Supply System"



5. Conclusion and ways forward

- The Forestry Administration (FA) has created an enabling conditions for the use of good quality seeds.
- Establish more seed sources of priority species
- Continued training seed suppliers/awareness raising on the use of quality seed
- Technical assistance and monitoring from FA to ensure good seeds and seedlings are sold to the end users.



Thank you.

